

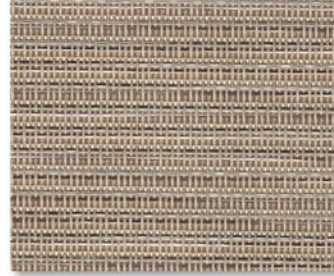
## SHEERWEAVE | 5000



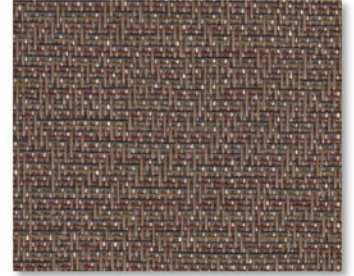
P60 BAMBOO BIRCH



Q43 MARBLE SAND



Q46 BAMBOO WHEAT



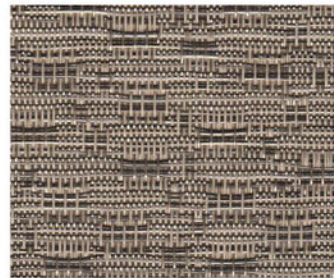
Q47 MOIRE MOCHA



Q49 RATTAN UMBER



Q50 BARK TIGER OAK



Q51 WICKER MUSHROOM



Q53 HONEYCOMB BROWN SUGAR



Q61 BARK ASH



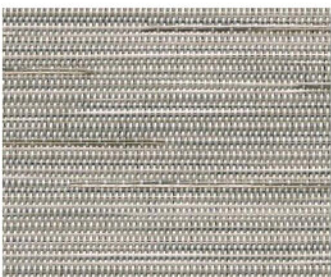
Q62 BARK PEWTER



Q63 LINEN PEARL



Q64 LINEN TAUPE



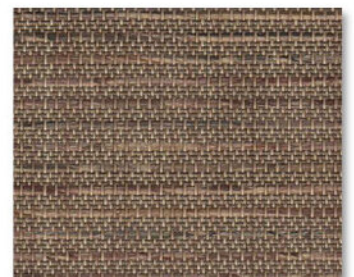
Q65 LINEN CLAY



Q66 METRO PLATINUM



Q94 TWEED OATMEAL



Q95 TWEED BUCKEYE

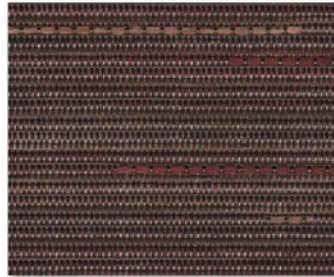
### Care & Handling

Remove dust with vacuum cleaner or compressed air. Do not scrub. Do not use solvents or any abrasive substance which might damage the coating of the fabric. Clean with a sponge or a soft brush dipped in soapy water using mild detergent. Rinse with clean water. Leave the blind down until completely dry. You can also very gently rub the fabric with a clean white pencil eraser to remove small stains.

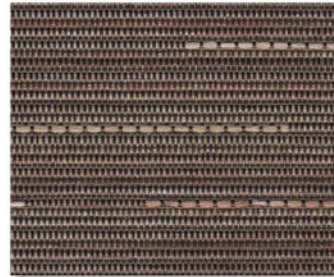
## SHEERWEAVE | 5000



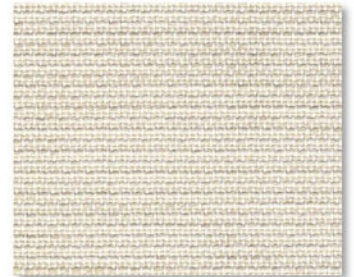
Q96 THATCH WHEATGRASS



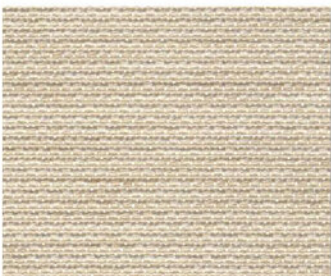
R11 LINEN CRANBERRY



R12 LINEN CINNAMON



R85 JUTE PARCHMENT



R86 JUTE FLAX



R87 JUTE LATTE



R88 JUTE COFFEE



R89 CHENILLE MARSHMALLOW



R90 CHENILLE PEARL



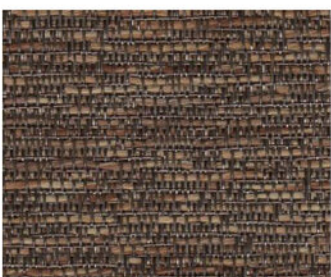
R91 CHENILLE HONEY



R92 CHENILLE DRIFTWOOD



R93 WICKER STRAW



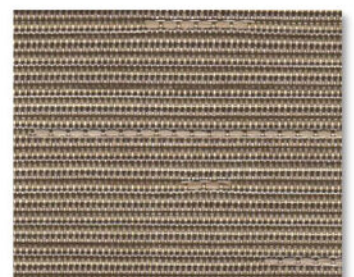
R95 BARK SIENNA



S75 TWINE METAL



U10 LINEN/ TOPAZ



U11 LINEN/ BURLAP

### Care & Handling

Remove dust with vacuum cleaner or compressed air. Do not scrub. Do not use solvents or any abrasive substance which might damage the coating of the fabric. Clean with a sponge or a soft brush dipped in soapy water using mild detergent. Rinse with clean water. Leave the blind down until completely dry. You can also very gently rub the fabric with a clean white pencil eraser to remove small stains.

## SHEERWEAVE | 5000



U12 LINEN/ CREAM



U16 CREPE/ TOASTED COCONUT



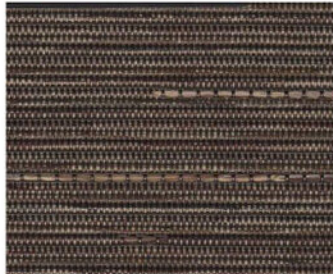
U24 SEAGLASS/ SILVER



U28 SEAGLASS/ CHARDONNAY



U29 SEAGLASS/ CRYSTAL



V88 LINEN/ FIG

### SPECIFICATION

**WIDTHS** 74" and 98"

**ROLL LENGTH** 30 Linear Yards

**FABRIC WEIGHT** Results may vary from pattern to pattern.

**FABRIC THICKNESS** Results may vary from pattern to pattern.

**OPENNESS** Results may vary from pattern to pattern.

**UV BLOCKAGE** Results may vary from pattern to pattern.

**COMPOSITION** Results may vary from pattern to pattern.

**WARRANTY** 5-Years Exterior, 10-Years Interior

**ENVIRONMENTAL BENEFITS**

**BACTERIAL AND RESISTANCE**

**ACOUSTICAL PERFORMANCE**

**FIRE CLASSIFICATION**

Certified to GREENGUARD and GREENGUARD Gold  
ASTM E 2180, ASTM G21, ASTM G22, AATCC30 Part 3,  
ASTM D 3273

NRC:0.15, SAA: 0.16

These results vary from pattern to pattern.



### Care & Handling

Remove dust with vacuum cleaner or compressed air. Do not scrub. Do not use solvents or any abrasive substance which might damage the coating of the fabric. Clean with a sponge or a soft brush dipped in soapy water using mild detergent. Rinse with clean water. Leave the blind down until completely dry. You can also very gently rub the fabric with a clean white pencil eraser to remove small stains.