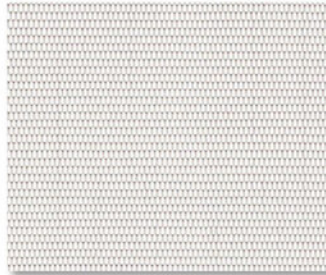


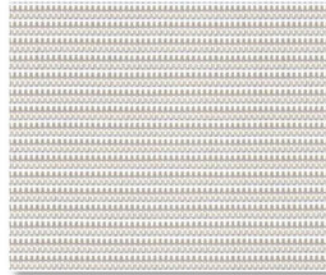
SHEERWEAVE | 4800 1%



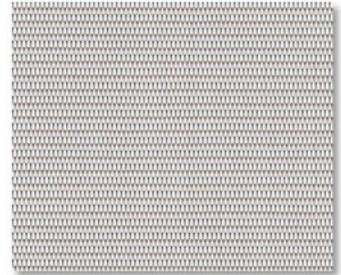
P06 CHALK



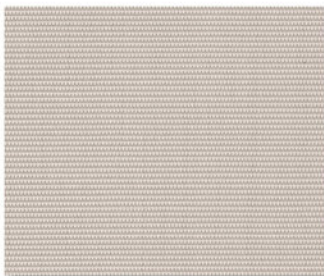
P75 PEARL



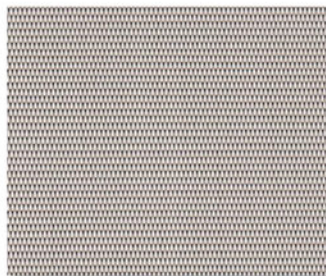
P07 ALABASTER



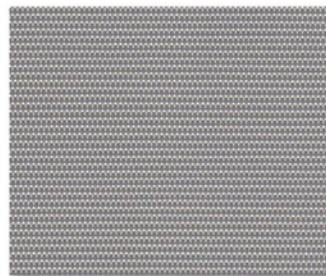
V16 GREY



Q97 SAND



Q99 TAUPE



V60 CLAY



V59 FLEECE



Q98 MOCHA



V61 MINK



V62 FLINT



V10 EBONY

SPECIFICATION

WIDTHS	63", 98" AND 126"
ROLL LENGTH	30 Linear Yards
FABRIC WEIGHT	18.50 oz/yd ²
FABRIC THICKNESS	0.036 in.
OPENNESS	~1%
UV BLOCKAGE	~99%
COMPOSITION	24% Polyester, 76% Vinyl on Polyester
WARRANTY	10-Years Interior, 5- Years Exterior

BACTERIAL AND RESISTANCE
ACOUSTICAL PERFORMANCE
ENVIRONMENTAL BENEFITS
FIRE CLASSIFICATION

ASTM E 2180, ASTM G21, ASTM G22, AATCC30 Part 3, ASTM D 3273
 NRC 0.30 / SAA 0.31
 Certified to GREENGUARD and GREENGUARD Gold
 California U.S. Title 19 (small scale), NFPA 701 TM#1 (small scale), NFPA 101 (Class A Rating), IBC Section 803.1.1 (Class A Rating), BS 5867 Part 2 Type B Performance, NFPA 701 TM#2 (large scale), CAN/ ULC-S 109 (large and small scale), CAN/CGSB2-4.162-M80



Care & Handling

Remove dust with vacuum cleaner or compressed air. Do not scrub. Do not use solvents or any abrasive substance which might damage the coating of the fabric. Clean with a sponge or a soft brush dipped in soapy water using mild detergent. Rinse with clean water. Leave the blind down until completely dry. You can also very gently rub the fabric with a clean white pencil eraser to remove small stains.