

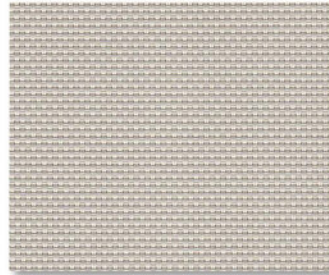
SHEERWEAVE | 4400 3%



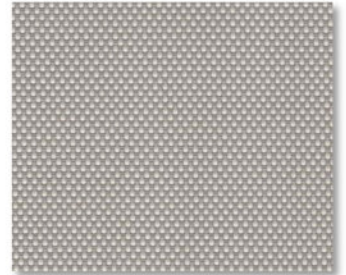
U58 ECO/ CHALK



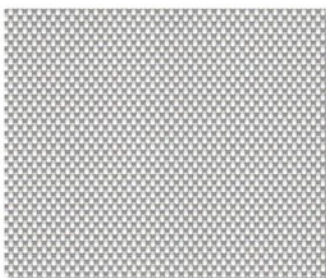
U59 ECO/ ALABASTER



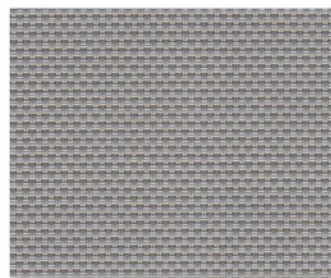
U60 ECO/ PEBBLESTONE



U61 ECO/ GREYSTONE



U62 ECO/ GRANITE



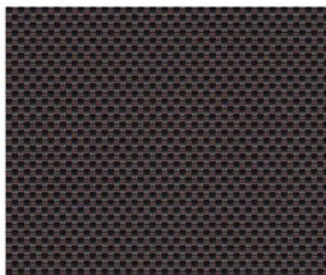
U63 ECO/ PEWTER



U64 ECO/ ASH



U65 ECO/ EBONY



U66 ECO/ TOBACCO

SPECIFICATION

WIDTHS 63", 84", 98" and 126"

ROLL LENGTH 30 Linear Yards

FABRIC WEIGHT 19.90 oz/yd²

FABRIC THICKNESS 0.034 in.

OPENNESS ~3%

UV BLOCKAGE ~97%

COMPOSITION 25% Polyester, 75% Vinyl on Polyester (Over 50% of compound components are derived from crop-based feed stocks and minerals. Over 2/3 of total compound is derived from non-fossil fuel-based materials.)

WARRANTY 5-Years Interior, 10- Years Exterior

BACTERIAL AND RESISTANCE ACOUSTICAL PERFORMANCE ENVIRONMENTAL BENEFITS

FIRE CLASSIFICATION

ASTM E 2180, ASTM G21, ASTM G22, AATCC30 Part 3, ASTM

NRC 0.20 / SAA 0.19

Certified to GREENGUARD and GREENGUARD Gold

Ca U.S. Title 19 (small scale), NFPA 701 TM#1 (small scale), NFPA 101 (Class A Rating), IBC Section 803.1.1 (Class A Rating), BS 5867 Part 2 Type B Performance, NFPA 701 TM#2 (large scale), CAN/ULC-S 109 (large and small scale), CAN/CGSB2-4.162-M80



Care & Handling

Remove dust with vacuum cleaner or compressed air. Do not scrub. Do not use solvents or any abrasive substance which might damage the coating of the fabric. Clean with a sponge or a soft brush dipped in soapy water using mild detergent. Rinse with clean water. Leave the blind down until completely dry. You can also very gently rub the fabric with a clean white pencil eraser to remove small stains.