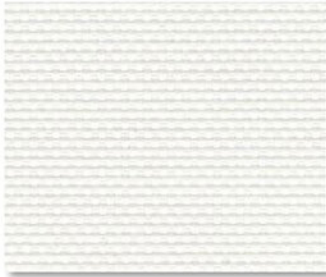


**SHEERWEAVE | 2390 5%**



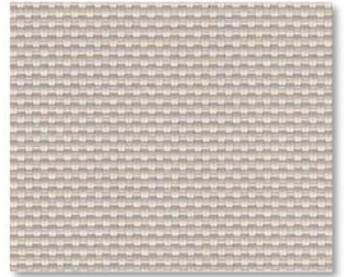
P12 OYSTER



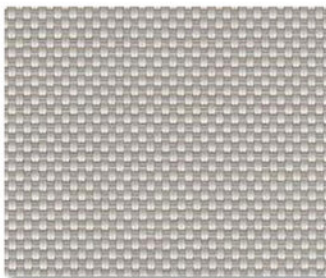
P13 OYSTER/ BEIGE



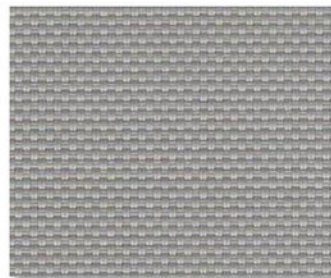
P14 OYSTER/ PEARL-GRAY



Q20 BEIGE



Q21 BEIGE/ PEARL-GRAY



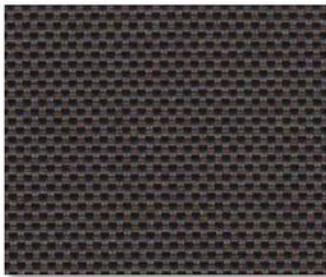
V20 PEARL/ GRAY



V21 CHARCOAL



V22 CHARCOAL/ GRAY



V24 CHARCOAL/ CHESTNUT



V32 CHARCOAL/ ALPACA

**SPECIFICATION**

**WIDTHS** 63", 98" and 126"  
**ROLL LENGTH** 30 Linear Yards  
**FABRIC WEIGHT** 11.8 oz/yd<sup>2</sup>  
**FABRIC THICKNESS** 0.017 in.  
**OPENNESS** ~5%  
**UV BLOCKAGE** ~95%  
**COMPOSITION** 35% Fiberglass, 65% Vinyl on Fiberglass  
**ACCOUSTICAL VALUE** NRC .10/ SAA .12  
**PRINTABLE** Yes

**FIRE CLASSIFICATION** NFPA 701 TM#1 (small scale) TM#2 (large scale)  
 NFPA 101 (Class A Rating)  
 California U.S. Title 19 (small scale)  
 BS 5867 Part 2 Type B Performance  
 CAN/ULC-S 109 (large and small scale)  
 CAN/CGSB2-4.162-M80  
 IBC Section 803.1.1 (Class A Rating)  
**BACTERIA/ FUNGAL RESISTANCE** ASTM E 2180 ASTM G21 AATCC30 Part 3 ASTM D 3273 ASTM G22 GREENGUARD Mold and Bacteria Standard ASTM 6329 includes Microban antimicrobial additives  
**LEAD FREE** RoHS/Directive 2002/95/EC REACH (EC 1907/2006) compliant ANSI/WCMA A 100.1-2007 for lead content US Consumer Product Safety Commission Section 101  
**WARRANTY** 10-Year (Interior), 5-Year (Exterior)

