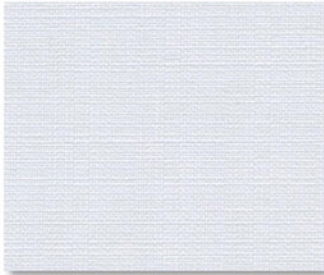
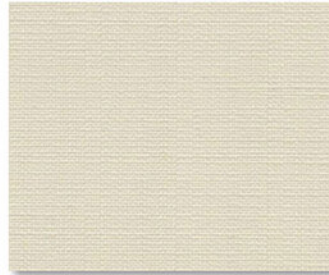




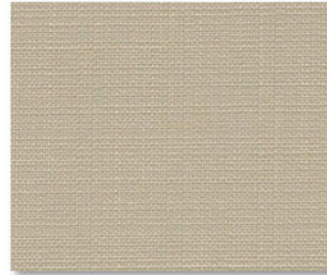
SHEERWEAVE | 7600 BLACKOUT



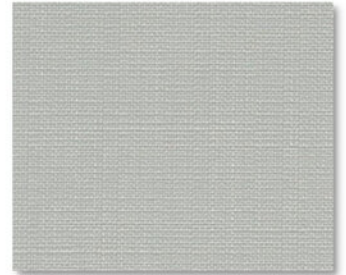
U90 BRIGHT WHITE



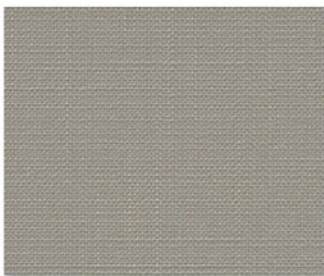
U91 SHELL



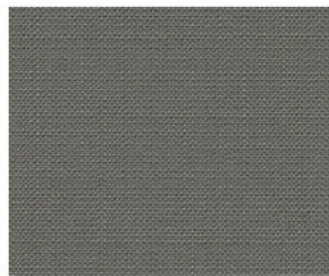
U92 KHAKI



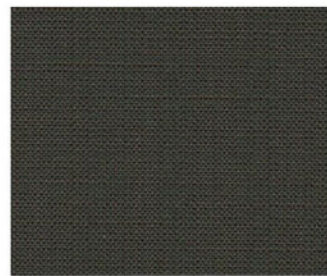
U93 DOVE GREY



U94 TAUPE



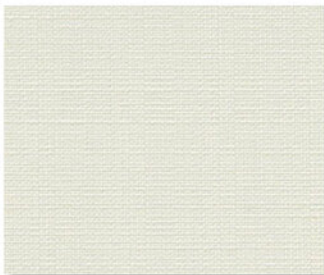
U95 THUNDER



U96 COFFEE



U97 COAL



U99 IVORY

SPECIFICATION

WIDTHS 118"

ROLL LENGTH 30 Linear Yards

FABRIC WEIGHT 11.80 oz/yd²

FABRIC THICKNESS 0.020 in.

OPENNESS Opaque

COMPOSITION 45% Polyester/ 55% Acrylic Foamed Backing

WARRANTY 5- Years Interior

BACTERIAL AND RESISTANCE ACOUSTICAL PERFORMANCE ENVIRONMENTAL BENEFITS

FIRE CLASSIFICATION

ASTM G21, AATCC 174-1998 Part II and III

NRC 0.05 / SAA 0.07

Certified to GREENGUARD

California U.S. Title 19 (small scale), NFPA 701 TM#1 (small scale), BS 5867 Part 2 Type B Performance, CAN/ULC-S 109 (large and small scale)



Care & Handling

Remove dust with vacuum cleaner or compressed air. Do not scrub. Do not use solvents or any abrasive substance which might damage the coating of the fabric. Clean with a sponge or a soft brush dipped in soapy water using mild detergent. Rinse with clean water. Leave the blind down until completely dry. You can also very gently rub the fabric with a clean white pencil eraser to remove small stains.